

Hyperdrive 5 / ANS-9010/B firmware upgrade guide

Overview:

ACARD has released a firmware, ver1.09 (3142_109), to fix some issues. Please refer to below firmware release history for detail. Please must follow the firmware upgrade procedures for how to upgrade firmware for your HD5 / ANS-9010/B.

Firmware Release History:

1.09 from 1.01

1. Change model name identify

9010B_ABCDEFGHI_Q_XXYY_ZZZ or 9010_ABCDEFGHI_Q_XXYY_ZZZ

Field A~H: meaning --> DDR size in slot 1 ~ 8

value --> 0: 512 MB

1: 1GB

2: 2GB

3: 4GB

4: 8GB

N: module not exist

F: module fails with invalid SPD or invalid memory type

Filed I: meaning --> ECC type

Value --> 0: DDR2 RAM built-in ECC function enabled

1: ANS-9010/B ECC emulation function enabled

Field Q: meaning --> SATA port number

Value --> 0: Host 0

1: Host 1

XXYY_ZZZ: meaning --> FW version

2. Fix SATA port mis-detect problem

3. Fix ANS-9010/B be detected as 0MB in AMI BIOS if RAM capacity less than 8GB

4. Fix system hangs if 9010/B was configured as RAID member in AMD/ATI M/B

5. Fix system hangs if 9010/B was configured as RAID member in ICH8R M/B

1.01 from 0.18

1. Enhance ANS-9010 dual-port reading performance

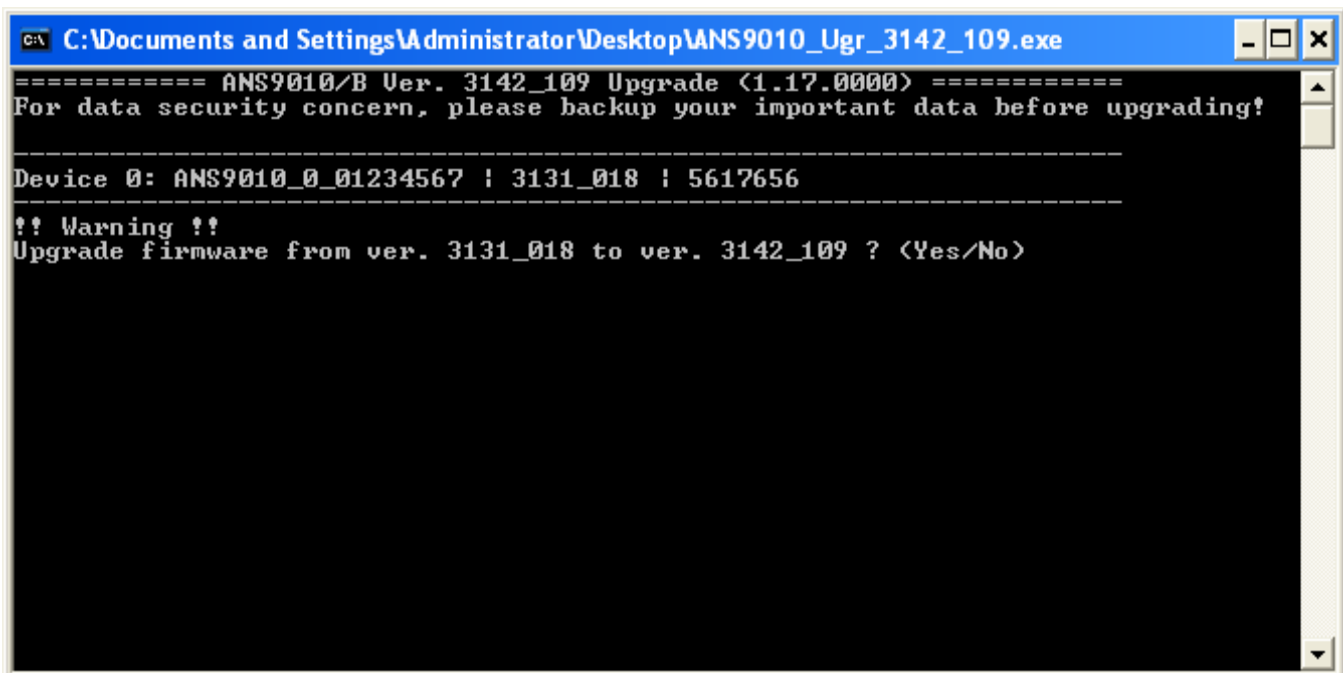
2. Fix OS can't boot from HD5 / ANS-9010 dual SATA mode while data restoring

System Requirement:

0. A PC platform with SATA controller which supports IDE operating mode
1. HD5 / ANS-9010
2. SATA cable x1
3. DDR2 DIMM module x1~8 pcs
4. Windows XP
5. Firmware upgrade utility compatible platform (south bridge):
 - a. Intel: ICH6-10/ ICH6R-10R series
 - b. nVidia: nForce 750a
 - c. AMD/ATI: SB400 / 600 / 750

Firmware Upgrade Procedures:

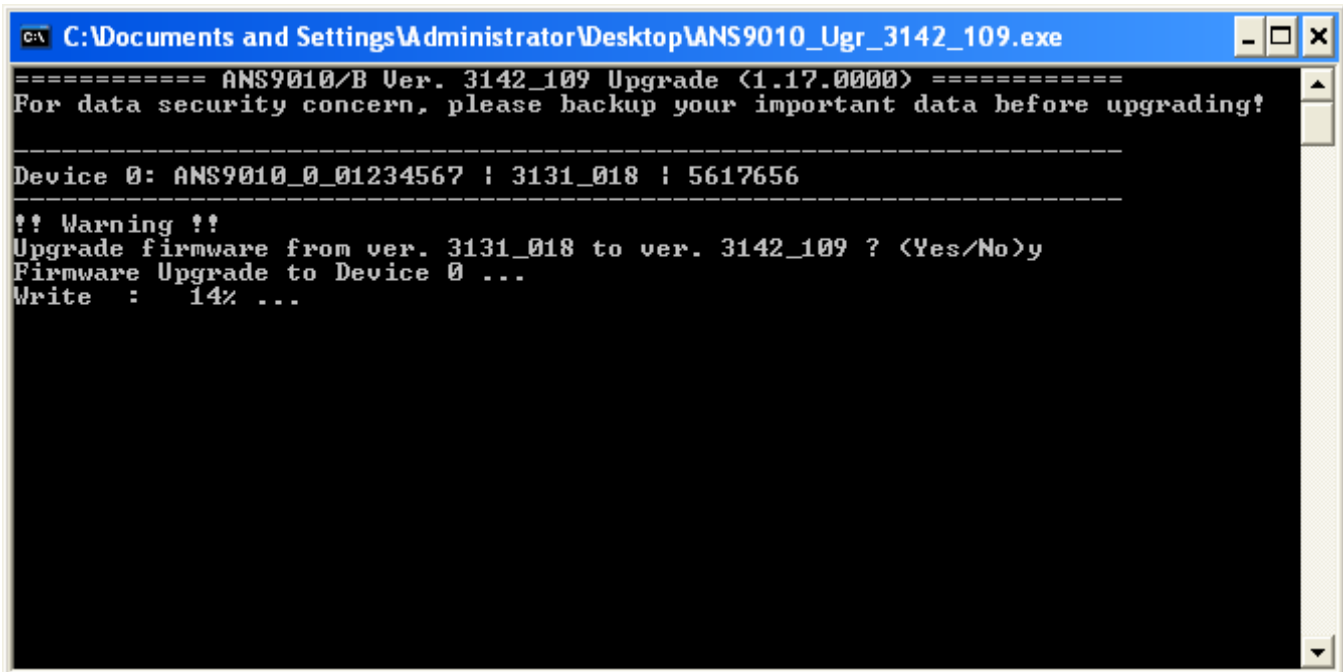
1. Set mainboard SATA controller to IDE mode.
 2. Install at least one DDR2 DIMM module on HD5 / ANS-9010.
 3. Connect HD5/ ANS-9010 to SATA port via a SATA cable(or two).
- PS: Firmware upgrade supports both Single SATA or Dual SATA mode.**
4. Boot up the PC with Windows XP.
 5. Double click the "ANS9010_B_FW_109.exe" file to run firmware upgrade utility
 6. Before upgrading, please make sure:
!!! All important data in DDR2 memories were properly backup !!!
 7. Follow the instructions and press "Y" to start firmware upgrade



```
C:\Documents and Settings\Administrator\Desktop\ANS9010_Ugr_3142_109.exe
==== ANS9010/B Ver. 3142_109 Upgrade <1.17.0000> =====
For data security concern, please backup your important data before upgrading!

-----
Device 0: ANS9010_0_01234567 ! 3131_018 ! 5617656
-----
!! Warning !!
Upgrade firmware from ver. 3131_018 to ver. 3142_109 ? <Yes/No>
```

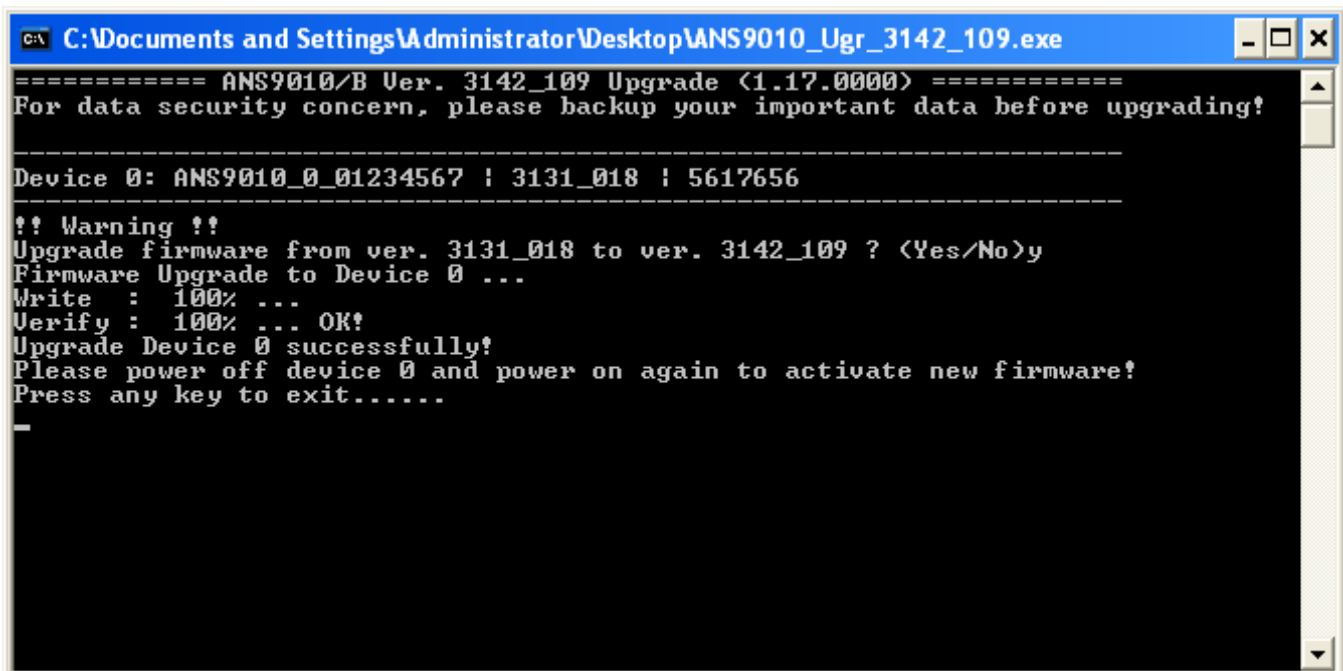
Firmware upgrade in processing.



```
C:\Documents and Settings\Administrator\Desktop\ANS9010_Ugr_3142_109.exe
===== ANS9010/B Ver. 3142_109 Upgrade <1.17.0000> =====
For data security concern, please backup your important data before upgrading!

-----
Device 0: ANS9010_0_01234567 ! 3131_018 ! 5617656
-----
!! Warning !!
Upgrade firmware from ver. 3131_018 to ver. 3142_109 ? <Yes/No>y
Firmware Upgrade to Device 0 ...
Write : 14% ...
```

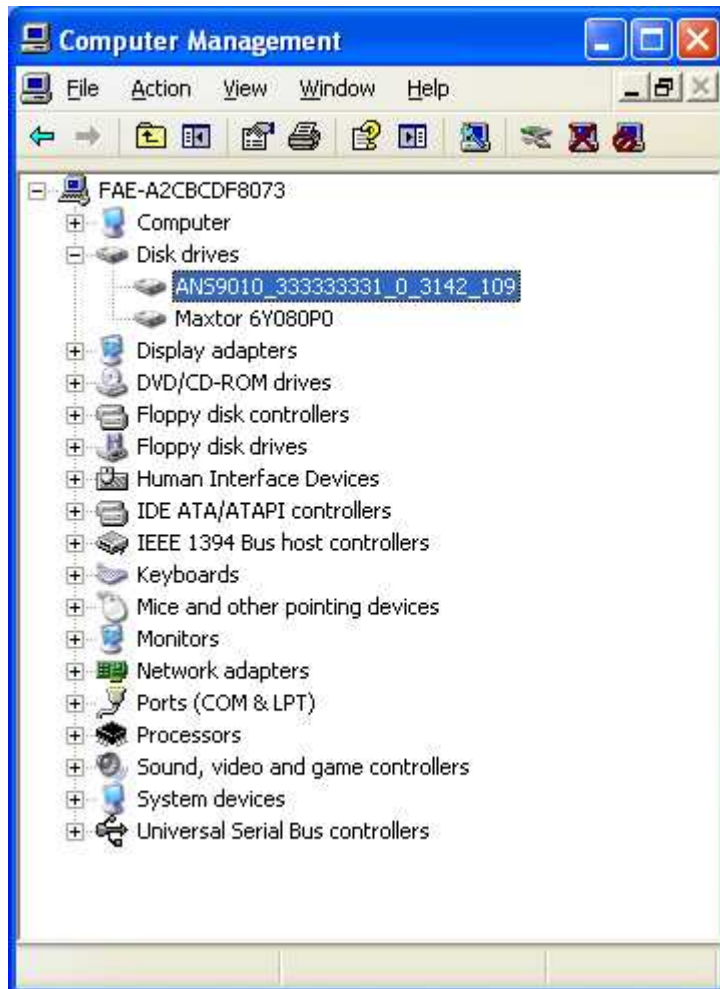
8. After upgrading, please power off ANS-9010/B and power on again to activate new firmware.



```
C:\Documents and Settings\Administrator\Desktop\ANS9010_Ugr_3142_109.exe
===== ANS9010/B Ver. 3142_109 Upgrade <1.17.0000> =====
For data security concern, please backup your important data before upgrading!

-----
Device 0: ANS9010_0_01234567 ! 3131_018 ! 5617656
-----
!! Warning !!
Upgrade firmware from ver. 3131_018 to ver. 3142_109 ? <Yes/No>y
Firmware Upgrade to Device 0 ...
Write : 100% ...
Verify : 100% ... OK!
Upgrade Device 0 successfully!
Please power off device 0 and power on again to activate new firmware!
Press any key to exit.....
-
```

9. You can check ANS-9010/B in "Device Manager-Disk drives" to check if firmware was up-to-date:



Provided by ACARD FAE
Date: 12/31/2008